

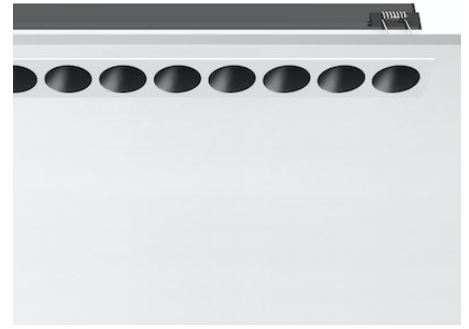
# FLOS

03.9166.40A White/Black

## Light Shadow Fixed Trim 12 Spots Optic Flood

NEW

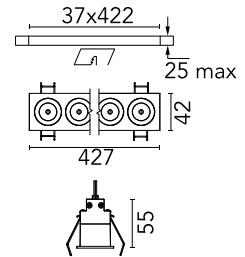
Designed by FLOS Architectural, 2022



Recessed integrated luminaire with 12 LED lighting spots. Remote power supply included (220-240V).

Are you a professional and your project needs consulting and support?

BOOK AN APPOINTMENT



### Main specifications

Mounting	Ceiling recessed
Environments	Indoor dry location
LED type	Power LED
Lamp category	LED
Iicos	No
Number of heads	1
Power (W)	32.4
Source flux (lm)	3240
System flux (lm)	2610

### Physical

Colour	White/Black
Trim	Yes
Orientation	Fixed
Recessed depth (mm)	75
Length (mm)	427
Net weight (kg)	0.66
IP internal	20
IP external	55

### Download

Mounting instructions [↓ PDF](#)

### Photometric Files

LDT / IES [↓ ZIP](#)

### Technical Drawings

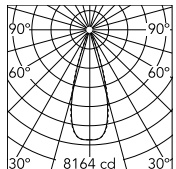
2D [↓ ZIP](#)

3D [↓ ZIP](#)

[↓ ZIP](#) Bim



## Schematic light drawing



Beam Angle: 33°

h(m)	E(lx)	D(m)
1	8160	0.60
2	2040	1.19
3	907	1.79
4	510	2.39
5	326	2.99

Luminous flux luminaire  
2610 lm (EXTREME CUT OFF)

### Photometric

Lighting type	Direct
Light distribution	Symmetric
CCT (K)	2700
CRI>	90
Beam angle C0-180 (°)	33
Beam angle C90-270 (°)	33

### Electrical

Insulation class	II
Frequency (Hz)	50/60
Main voltage (Vac)	220.00
Alternating current voltage (Vac)	230
LED voltage Vf (Vdc)	36
Driver	Remote included
Dimmable	No
Dimming type	Non Dimmable
Emergency type	No

### Notes

Pre-installation frame not required.